

LARGE OPEN SINGLE OFFICE AVAILABLE



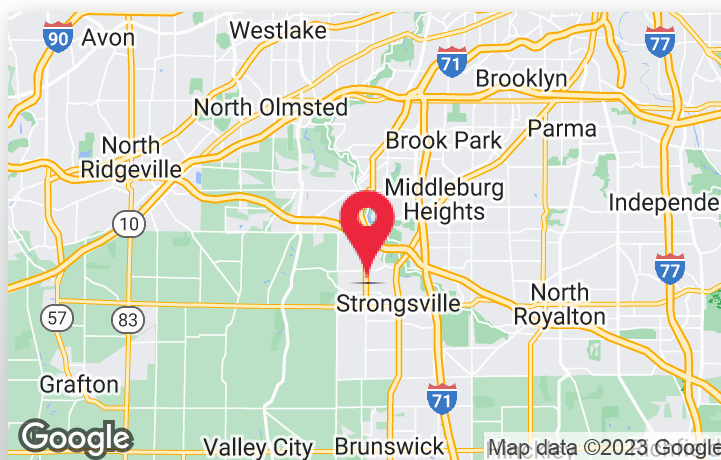
12351 PROSPECT ROAD
STRONGSVILLE, OH 44136

LEASE RATE: \$650/MO INCLUDES UTILITIES



PROPERTY HIGHLIGHTS:

- Available: 540 SF
- Suite B: 540 SF (\$650/MO) - First Floor Suite, 10' Ceiling Clears, and Separate Exterior Entrance
- Landlord pays Utilities, Landscaping, and Snow Removal Fees
- Signage Available in Front of the Building
- Parking: ±20 Spaces
- Highway Access: 3 miles to I-71/Royalton Road Interchange



LISTING AGENT

Sheila Miu

Sheila@GerspacherGroup.com

330.722.5002

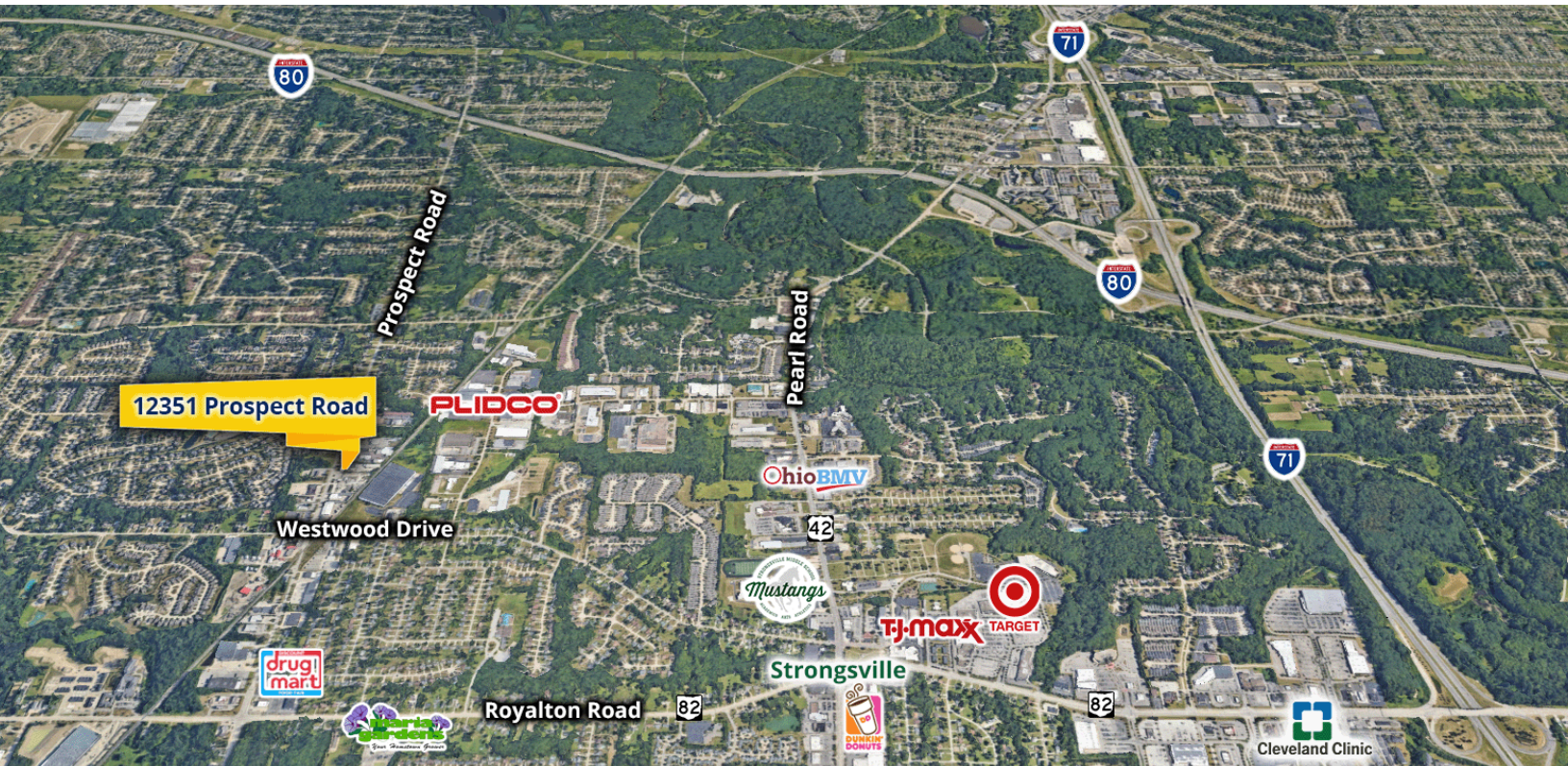


LARGE OPEN SINGLE OFFICE AVAILABLE



12351 PROSPECT ROAD
STRONGSVILLE, OH 44136

LEASE RATE: \$650/MO INCLUDES UTILITIES



PROPERTY OVERVIEW

Large Single Office Space Available. Suite B is 540 SF of Open Space with 10' Ceiling Clears. This suite has a separate entrance from the exterior. Plenty of parking available. Landlord pays Utilities, Snowplow, and Landscape Fees.

LOCATION OVERVIEW

Located on Prospect Road near intersection of Westwood and Prospect in the City of Strongsville. 3 miles from I-71, near retailers Mr. Tire, Slim and Chubby's and Kurtz Brothers.

DEMOGRAPHICS

	1 MILE	3 MILES	5 MILES
Total Households	2,423	19,225	51,728
Total Population	5,409	43,923	121,775
Average HH Income	\$119,186	\$97,906	\$92,396

The information contained herein is from sources deemed reliable but no warranty or representation is made to the accuracy thereof.



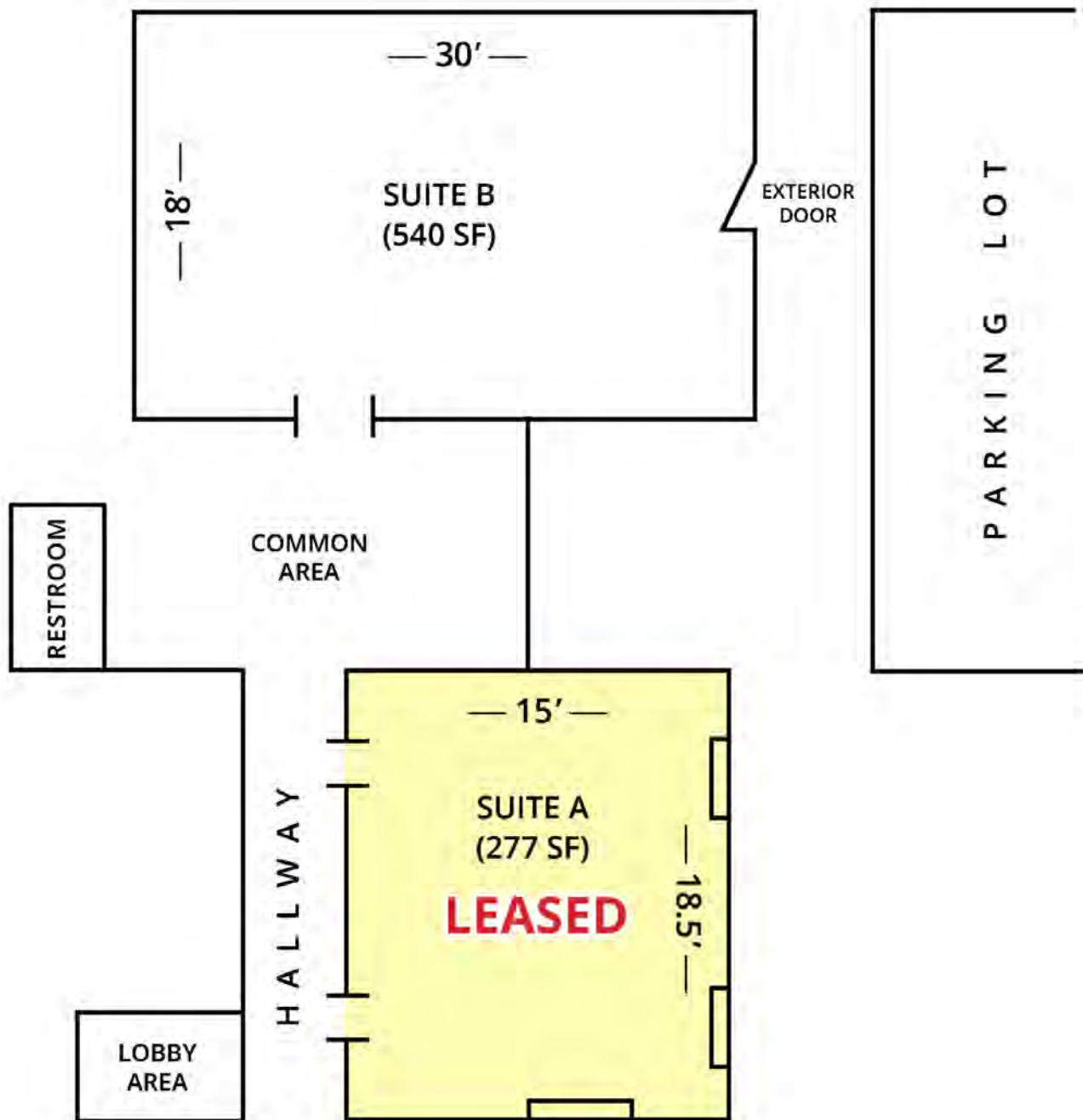
LARGE OPEN SINGLE OFFICE AVAILABLE



12351 PROSPECT ROAD
STRONGSVILLE, OH 44136

LEASE RATE: \$650/MO INCLUDES UTILITIES

FLOORPLAN 12351 Prospect Road



LARGE OPEN SINGLE OFFICE AVAILABLE



12351 PROSPECT ROAD
STRONGSVILLE, OH 44136

LEASE RATE: \$650/MO INCLUDES UTILITIES



Lobby



Suite B

