

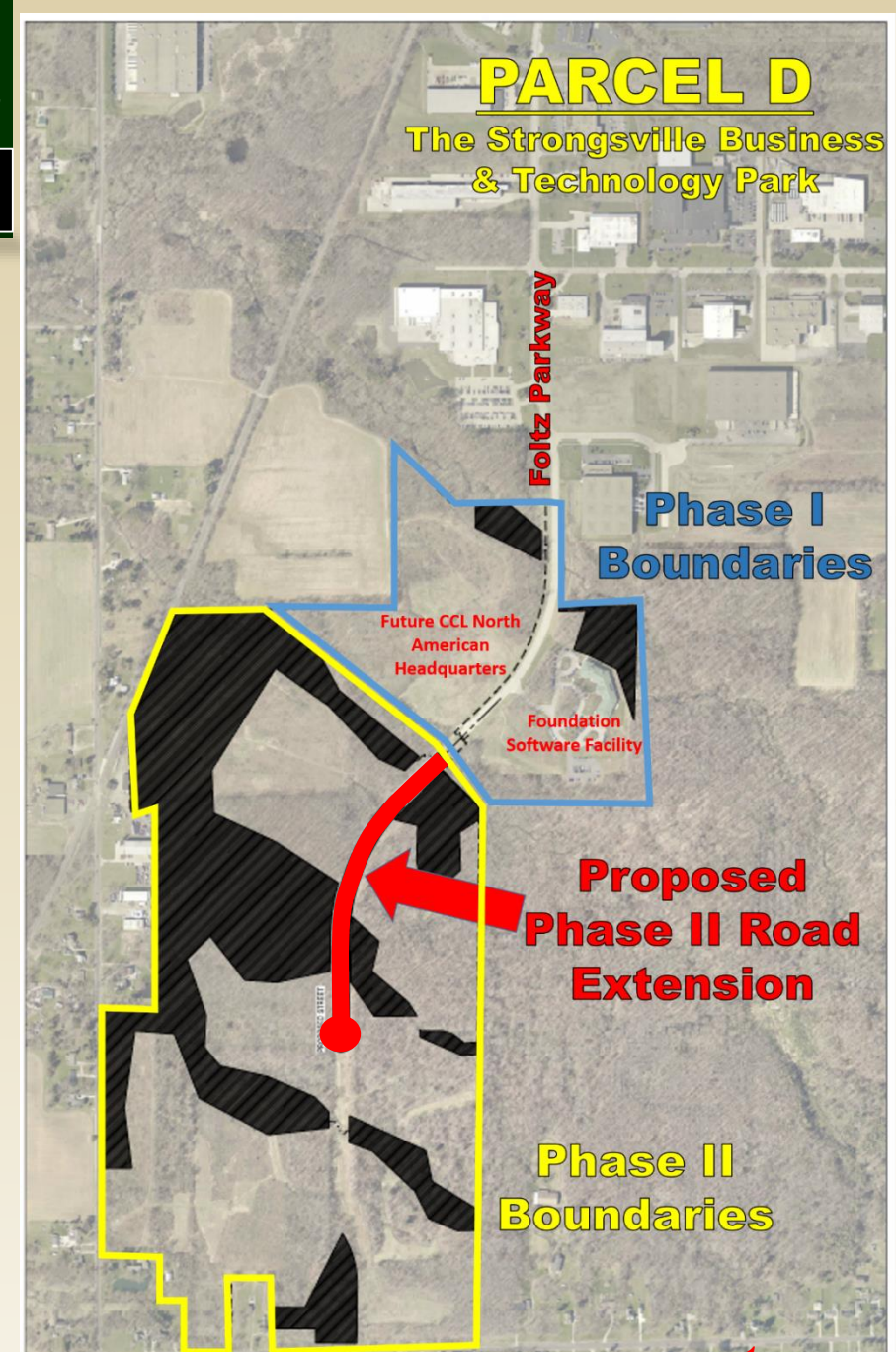


THE CITY OF STRONGSVILLE

Foltz Parkway Extension – Phase II

Project Summary:

- **Extend Foltz Parkway South 2,000 Lineal Feet, ending in a cul-de-sac**
- **Creating Access to New Industrial Sites**
 - Greenfield Property with Environmental Complete
 - Owned Solely by the City of Strongsville
 - Properly Zoned for JobsOhio Targeted Industries
 - Utilities Extended to Phase II Border
- **Essential Project within Cuyahoga County**



THE CITY OF STRONGSVILLE



Foltz Parkway Extension Phase II

Distance from Site

- 9.5 miles to Cleveland Hopkins International Airport
- 4.5 miles to I-71 entrance at Royalton Road
- 6.5 miles to I-71 entrance at Pearl Road
- 5.5 miles to I-80

Truck Traffic from Foltz Parkway Extension Phase II

