

AVAILABLE FOR LEASE
ALFRED PROFESSIONAL BUILDING
13477 PROSPECT ROAD
STRONGSVILLE, OHIO 44149



VANCO REALTY

© 2020 Vanco Realty, the information contained in this document has been obtained from sources believed reliable. Vanco Realty has not verified it and makes no guarantee, warranty or representation about it. It is your responsibility to independently confirm its accuracy and completeness. Any projections, opinions, assumptions or estimates used are for example only and do not represent the current or future performance of the property. You and your advisors should conduct a careful, independent investigation of the property to determine to your satisfaction the suitability of the property for your needs. Licensed Real Estate Broker. Vanco Realty, 20062 Winding Trail, Strongsville, Ohio 44149.



CONTACT

JIM VANCO | PRESIDENT
VANCO REALTY | COMMERCIAL REAL ESTATE
M: 440-668-7517 | E: JVANCOREALTY@GMAIL.COM

- 495 SF TO 1,700 SF AVAILABLE
- SIGNAGE ON PROSPECT ROAD
- RENTAL RATES \$12.00/SF TO \$14.00/SF GROSS WITH TENANT ELECTRIC AND SUITE CLEANING EXTRA
- EASY ACCESS TO HIGHWAYS: I-71 AND OHIO TURNPIKE (I-80)



VANCO REALTY

PROPERTY OVERVIEW

ALFRED PROFESSIONAL BUILDING
13477 PROSPECT ROAD
STRONGSVILLE, OHIO 44149





VANCO REALTY

PROPERTY PHOTOS

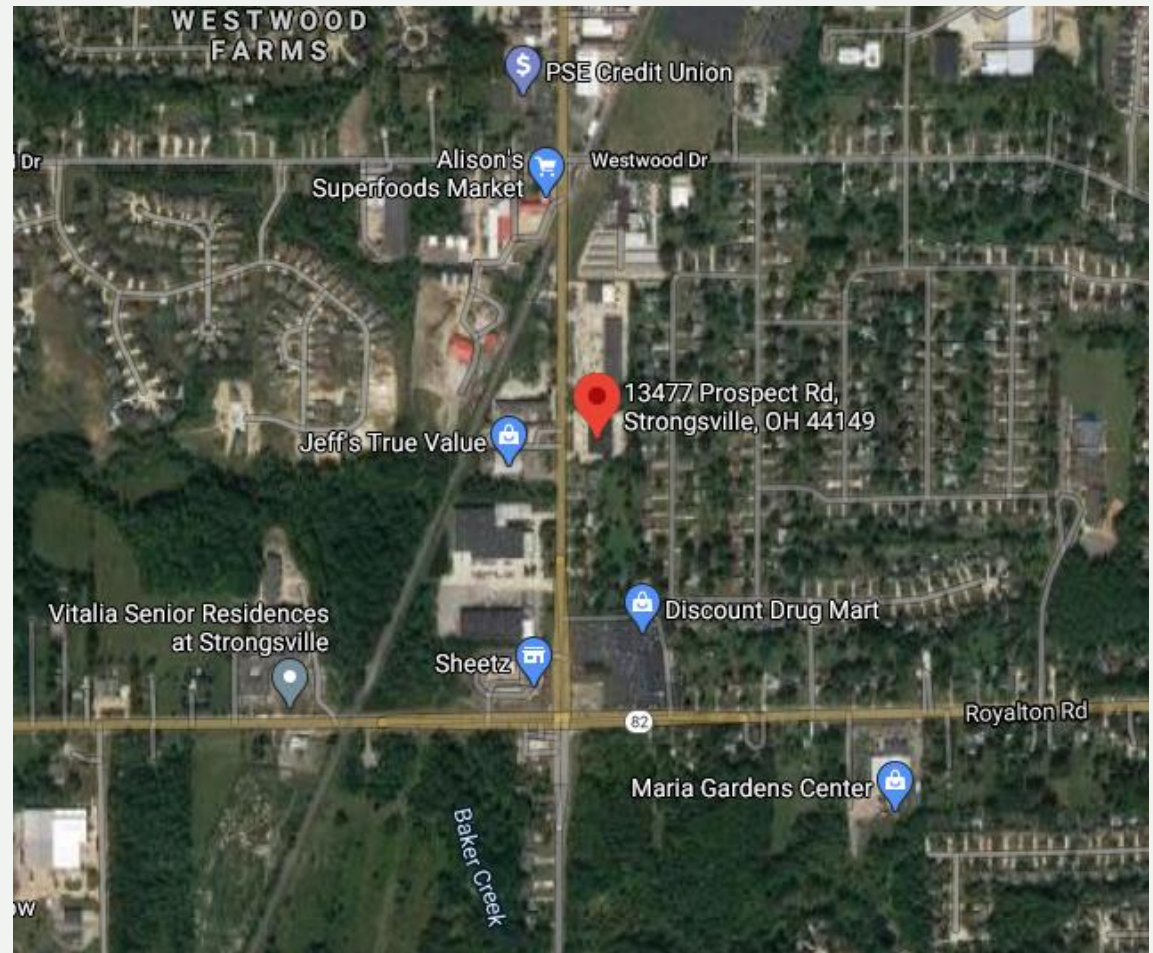
ALFRED PROFESSIONAL BUILDING
13477 PROSPECT ROAD
STRONGSVILLE, OHIO 44149



DEMOGRAPHICS | STRONGSVILLE
ALFRED PROFESSIONAL BUILDING
13477 PROSPECT ROAD
STRONGSVILLE, OHIO 44149



VANCO REALTY



DEMOGRAPHICS	
TOTAL POPULATION	44,853 PEOPLE
MEDIAN HOUSEHOLD INCOME	\$87,264
MEDIAN AGE	45.6 YEARS
MEDIAN HOUSING VALUE	\$203,710