

# SINGLE OFFICES IN A PRIME LOCATION FOR LEASE



**15110 FOLTZ INDUSTRIAL PARKWAY  
STRONGSVILLE, OH 44136**

**LEASE RATE: \$195 - \$545/MO**



## PROPERTY HIGHLIGHTS

- Available: 116 SF - 364 SF
- 7 Private Offices with Access to Restrooms and a Shared Kitchenette
- Parking: 20+ Spaces
- Zoning: General Industrial
- Traffic Count: ±17,000
- Highway Access: Less than a mile from I-82 and 6 miles from I-71



## LISTING AGENTS

**Dillon Swank**

dillon@gerspachergroup.com

**Morgan Faunce**

morgan@gerspachergroup.com

**330.722.5002**

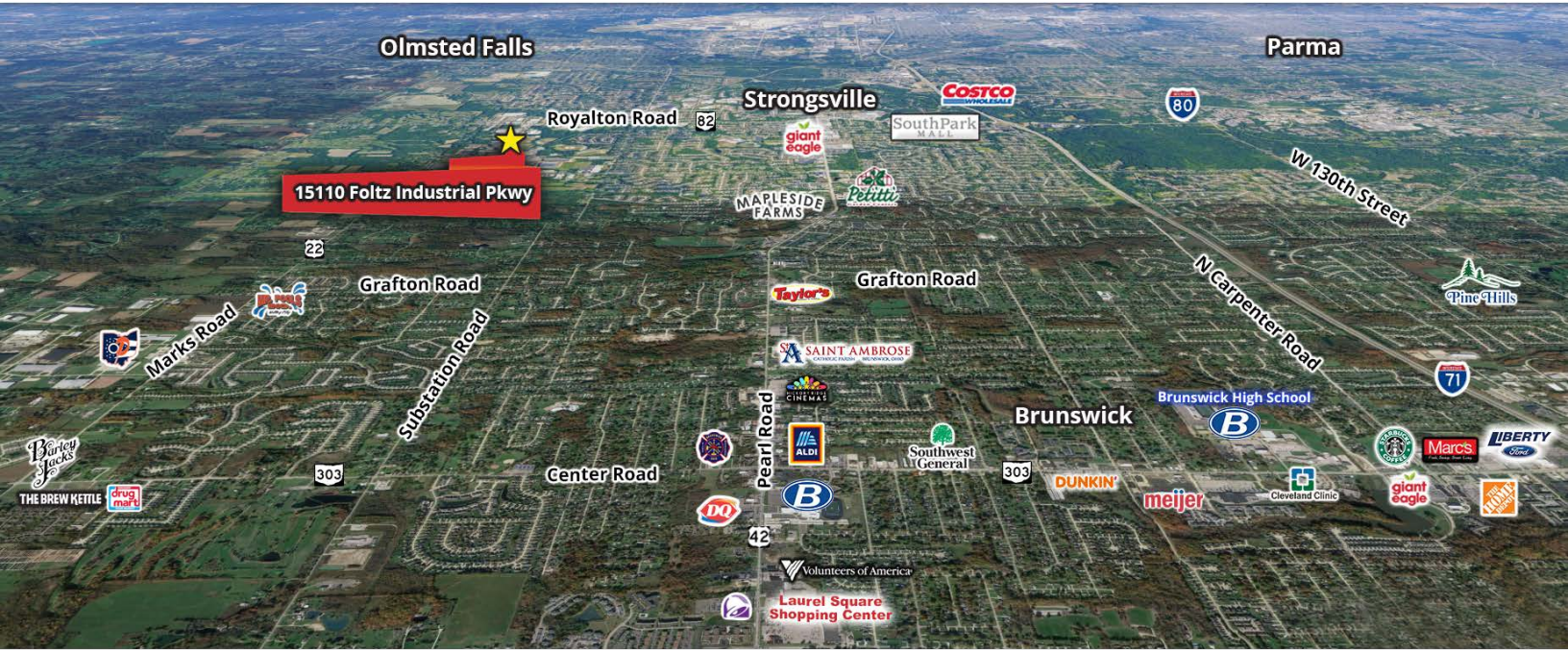


# SINGLE OFFICES IN A PRIME LOCATION FOR LEASE



**15110 FOLTZ INDUSTRIAL PARKWAY  
STRONGSVILLE, OH 44136**

**LEASE RATE: \$195 - \$545/MO**



## PROPERTY OVERVIEW

15110 Foltz Industrial Parkway offers private office suites for lease within a professionally maintained industrial building in Strongsville's established business corridor. The available offices are well-suited for administrative, professional, or service-oriented users seeking a quiet and functional workspace within an industrial setting. Tenants benefit from convenient on-site parking and excellent regional access, with close proximity to I-71 and the Ohio Turnpike. This location provides an efficient and cost-effective office solution for businesses serving the Greater Cleveland market.

## LOCATION OVERVIEW

Located on Foltz Industrial Parkway, the property is positioned within Strongsville's well established industrial district in southern Cuyahoga County, Northeast Ohio. The site offers direct access to major regional transportation routes, with Interstate 71 and the Ohio Turnpike (I-80) minutes away, providing efficient connections throughout the Midwest and beyond. Strongsville's central location between Cleveland and Akron, combined with nearby amenities and a strong labor pool, makes this an ideal industrial and manufacturing location.

## DEMOGRAPHICS

	1 Mile	3 Miles	5 Miles
Total Population	1,862	34,116	108,859
Total Units	788	14,589	47,777
Median Income	\$99,787	\$103,993	\$92,436

The information contained herein is from sources deemed reliable but no warranty or representation is made to the accuracy thereof.



# SINGLE OFFICES IN A PRIME LOCATION FOR LEASE



**15110 FOLTZ INDUSTRIAL PARKWAY  
STRONGSVILLE, OH 44136**

**LEASE RATE: \$195 - \$545/MO**

## AVAILABLE SPACES

SUITE	SIZE (SF)	LEASE TYPE	LEASE RATE	DESCRIPTION
Suite 100	336 SF	Full Service	\$495 per month	Large 2 room office with interior and exterior windows
Suite 101	116 SF	Full Service	\$195 per month	1 room office with interior & exterior windows
Suite 105	364 SF	Full Service	\$545 per month	Large 1 room office with exterior windows
Suite 106	252 SF	Full Service	\$385 per month	1 room office with exterior windows
Suite 107	196 SF	Full Service	\$295 per month	1 room office with exterior windows
Suite 108	168 SF	Full Service	\$250 per month	1 room office with exterior windows
Suite 109	210 SF	Full Service	\$315 per month	1 room office with exterior windows

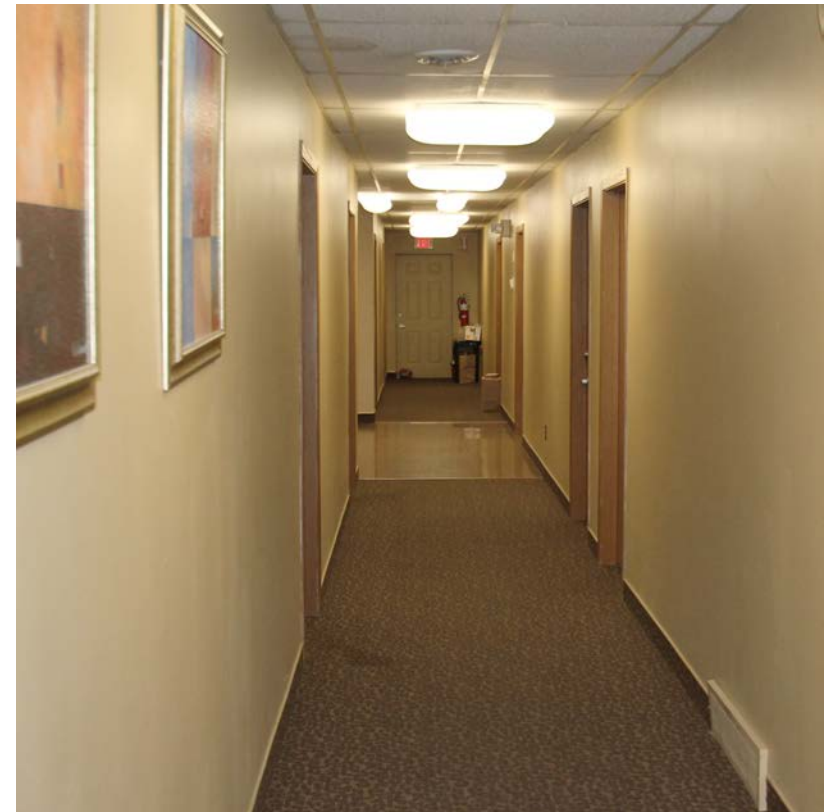


SINGLE OFFICES IN A PRIME LOCATION FOR LEASE



15110 FOLTZ INDUSTRIAL PARKWAY  
STRONGSVILLE, OH 44136

LEASE RATE: \$195 - \$545/MO



# SINGLE OFFICES IN A PRIME LOCATION FOR LEASE



**15110 FOLTZ INDUSTRIAL PARKWAY  
STRONGSVILLE, OH 44136**

**LEASE RATE: \$195 - \$545/MO**

